



Motor Operators - CGEXTERNAL

Product List

MOTOR OPERATORS

Motor operators offer the most efficient means of operation. They soon pay for themselves by conserving heat, by more efficient traffic flow, by savings in manpower. Further, for frequent or rapid use, remote controlled motor operators are mandatory.

Motor operators are integral power units engineered for long life and reliability. For each door or grille requirement, horsepower and gear reduction are designed conservatively.

STANDARD FEATURES

U.L. LISTED OPERATOR

INTERNAL PRE-WIRING TO TERMINAL BLOCK

MOTOR -high starting torque ball bearing

GEAR REDUCTION-worm gear in oil bath (Model M)

-chain sprocket gearing (Model H)

CONTROLLER-magnetic across-the-line reversing

BRAKE-solenoid actuated holding (Model M)

-mechanical self-locking (Model H)

CLUTCH-adjustable friction type (Model H)

EMERGENCY CHAIN OPERATOR-independent of motor

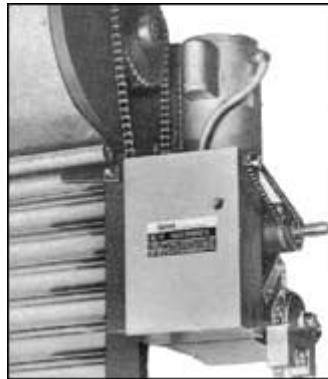
SAFETY INTERLOCK-for chain operation

LIMIT SWITCH-geared chair, driven

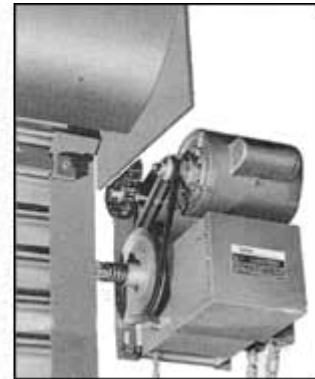
OVERLOAD PROTECTION - NEMA 1 components

CONTROL STATION - 3 button

TRANSFORMER-24 volt control circuit



MO



H

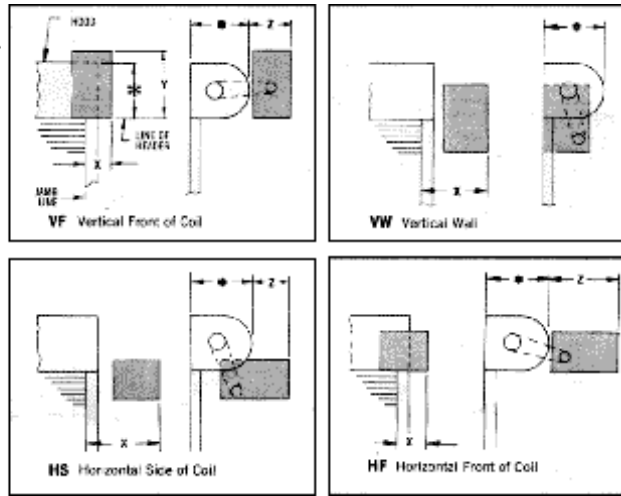
OPERATOR MOUNTINGS (INTERIOR)+

VF mounting (vertical front-of-coil) is standard for Service doors and steel grilles up to approx. 270 sq. ft., and for all aluminum Grilles. VW mounting (vertical wall) is standard for larger steel doors and grilles, and for all Fire doors.

Optional mountings (HT, HS, HF) are available when in accord with good engineering practice.

+For doors mounted on exterior face of wall, with operators on exterior (i.e., types SEM & AEM), the VW mounting is applied.

mtg	model	X	Y	Z	*
VF	M	9	29	18	refer to manual
	H	9	18	18	
VW	M	23	-	-	
	H	23	-	-	
HT	M	9	18	9	
	H	9	18	9	
HS	M	21	-	18	
	H	21	-	18	
HF	M	9	-	28	
	H	9	-	28	



TYPICAL OPTIONAL EQUIPMENT

OPERATORS-explosion-proof, water-tite, dust-tite

MOTORS-enclosed, special voltages

STARTERS-explosion-proof, water-tite, dust-tite, combination with disconnect means

SAFETY EDGE BOTTOM BARS -electric or pneumatic

STATIONS -key-operated, explosion-proof, oil-tite, pull cord, pendant, weatherproof.

SAFETY EDGE BOTTOM BARS -electric or pneumatic

Torque limiters

Auxiliary limit switches

Timers, Treadles, Bell signals

Radio transmitters & receivers

Photo-electric controls, Loop detectors

Interlocks between pairs of doors

Interlocks as safety cut-out switches

[Products](#)

[Services](#)

[Clients](#)

[Contact Us](#)

[Home](#)



15-20 129th Street, College Point, NY 11356

Phone: 718-939-9700 or 212-233-9700 Fax: 718-353-0724